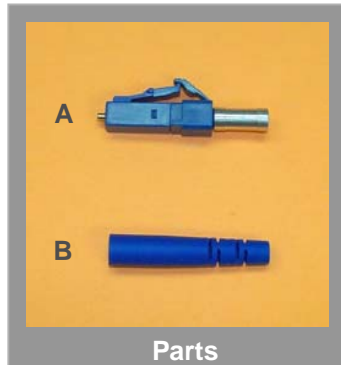


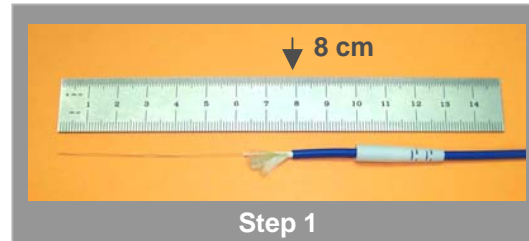
Assembly Instructions for GigaPOF[®] Crimp-on LC Connector

part numbers: GigaPOF-CN-SLC-LDCR, GigaPOF-CN-DLC-LDCR



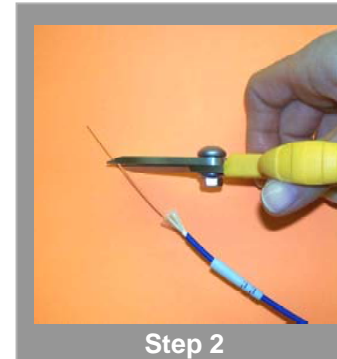
Parts

- A. Connector uni-body
- B. Strain relief boot.



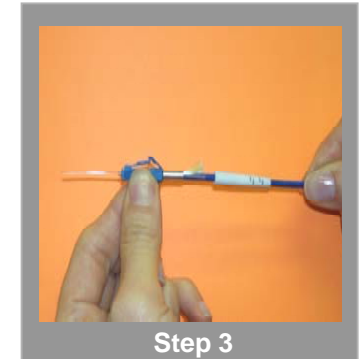
Step 1

Prepare cable as shown. All distances are approximate, and can be cut by eye. Be careful not to nick the fiber when stripping the inner buffer.



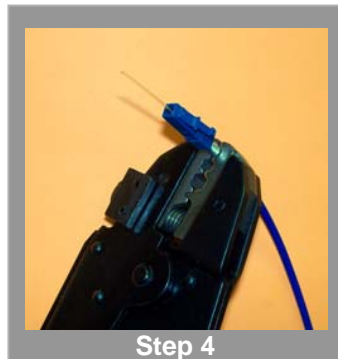
Step 2

Cut the front end of the fiber at a 45-degree angle



Step 3

Push connector body back as far as it can go. Fold the yarn back over the cable sheath and under the crimp ring. Be careful to avoid kinking the fiber.



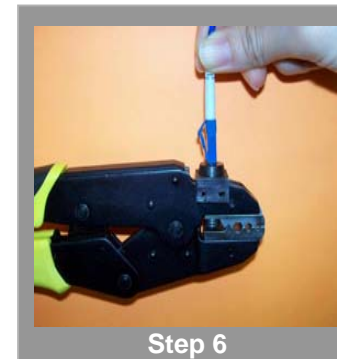
Step 4

Push the connector body back against the cable. Crimp the back-end of the connector body onto the cable sheath, using the front first hex slot. Be sure that the hex side of the slot is facing the connector body. Push the crimp ring down to the bottom of the hex cut-out (~3.5 mm long) in the slot, but no further. The round side of the slot overlaps the cable and should not be used to crimp the ring.



Step 5

Use the nippers to cut the fiber just past tip of the ferrule. The amount of fiber protruding from the front of the connector should be 0.5 mm or less



Step 6

Push the ferrule as far as it will go into the swaging jaws on the top of the crimp tool. Swage the ferrule on the fiber by compressing the handle of the crimp tool until it releases.



Step 7

Polish for 20 seconds on 3 micron (pink) polishing paper, followed by 10 seconds on 0.3 micron (white) paper. Blow away dust using aerosol duster after each step.